



## Elm Park, Brixton, SW2

3 bedroom house - terraced for sale

£835,000

Freehold

### Property Details

An exceptional three bedroom Victorian house with a wraparound garden, impressive kerb appeal and thoughtfully finished interiors, set within a fantastic community. The exterior has been comprehensively renovated within the last twelve months, with a freshly rendered and repainted façade, smart iron railings and gates, mosaic footpath, tiled front garden with planting, a handsome new front door and some newly installed sash windows. Inside, a spacious double reception showcases original floorboards, high ceilings and a charming feature fireplace. Plantation-shuttered sash windows bathe the front lounge in light, while glazed doors from the dining area open directly onto the garden, ideal for entertaining. The kitchen is fitted with classic shaker cabinetry in neutral tones, with a sink beneath the window and an additional door to the side garden, perfect for al fresco dining. The garden wraps around two sides, offering a paved seating area and a raised lawn with excellent potential. Upstairs, the principal bedroom spans the width of the house, complemented by a second generous double and a versatile third bedroom to the rear. Redecorated throughout, this is a turnkey home rich in Victorian charm.

Council tax band E

EPC rating C (69)

### Features

- Three bedrooms
- Private garden
- Victorian house
- Beautifully presented
- Local parade of shops and cafes moments away
- Sought after street in the LTN
- Short walk to Brockwell Park and central Brixton
- Village-esque Herne Hill a pleasant stroll through the park
- Victoria Line, Overground, Trains and regular buses
- Freehold





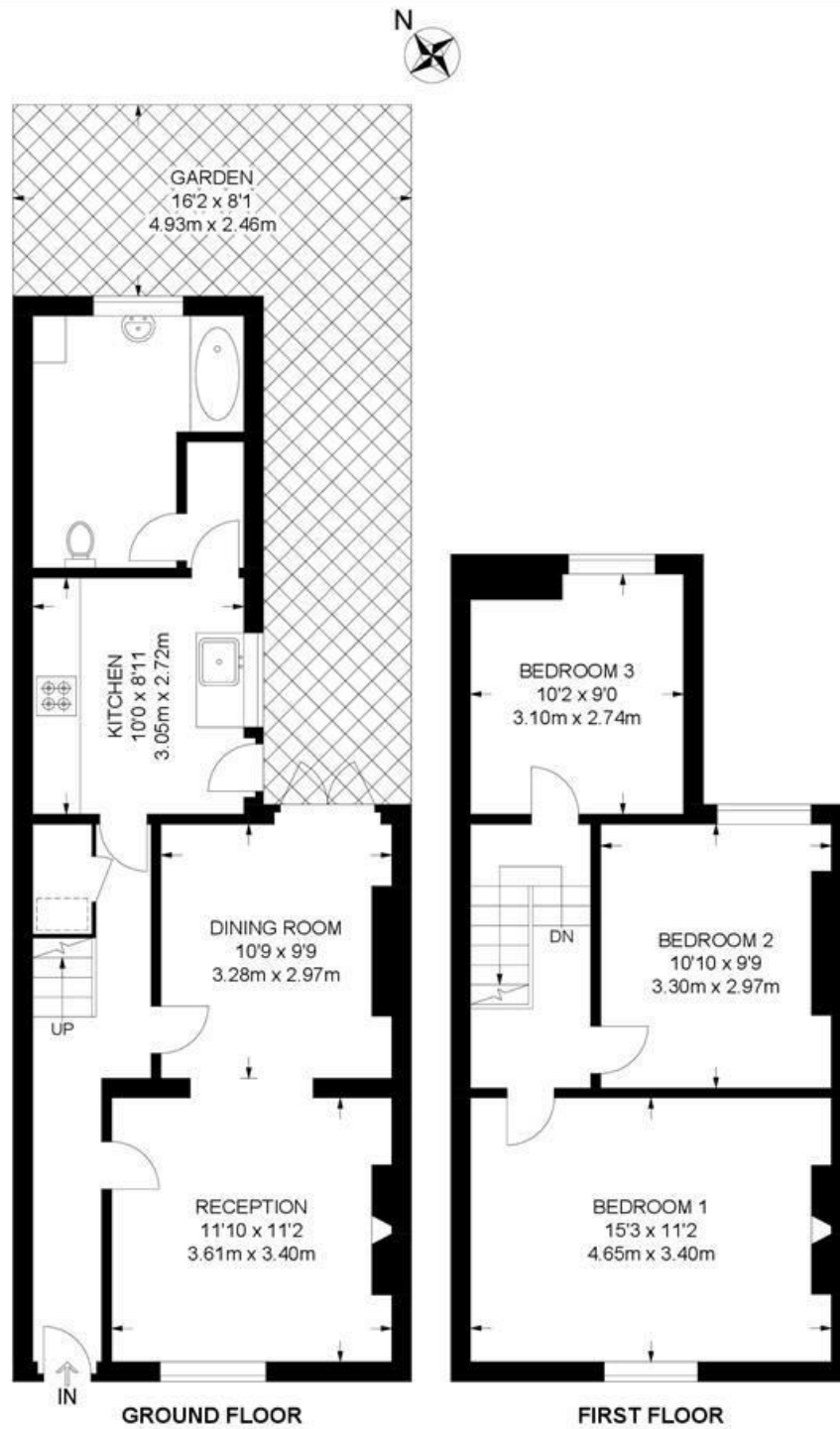




Elm Park, Brixton, SW2

**Elm Park, SW2**  
**3 Bedroom House**

APPROXIMATE GROSS INTERNAL AREA: 980 SQ FT / 91 SQ M



While we try our very best, floor plans are produced as a guide only and we take no responsibility for the precise accuracy with which any property is represented.



Elm Park, Brixton, SW2

